



3D Strata Objects Registration within LADM Framework for Malaysia

**Nur Amalina Zulkifli,
Alias Abdul Rahman, and
Peter van Oosterom**

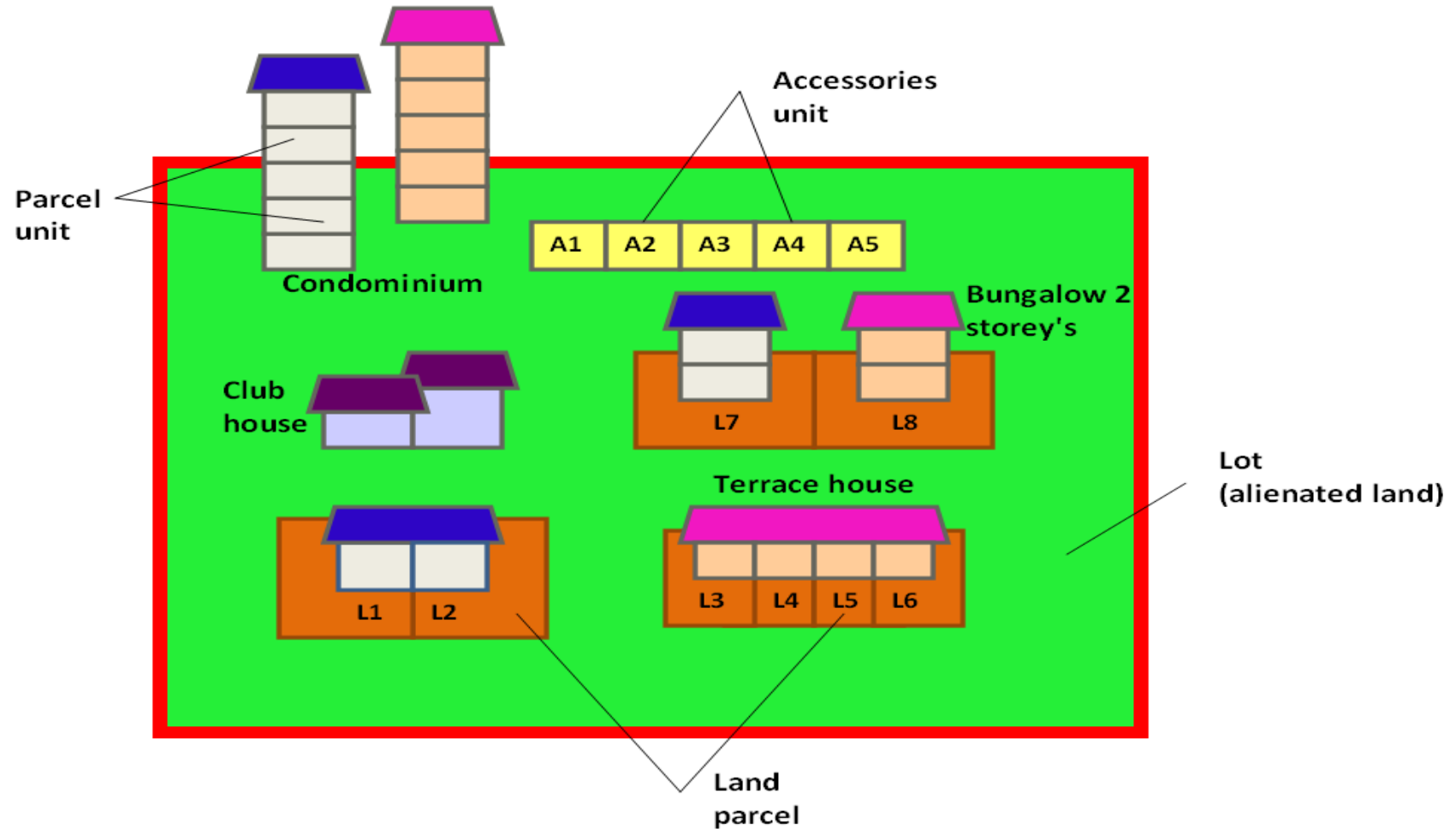
Introduction

- Strata (parcels within multilevel buildings)
- Recently revised (2013) Strata Titles Act
- The amendments include:
 - Introduction of the Electronic Land Administration System of Strata Titles
- Thus, LADM
- 3D strata objects registration.

3D strata objects registration

- All multilevel buildings with multi-owners have a Management Corporation (MC).
- The MC:
 - all proprietors are automatically members
 - responsibility of administering the strata scheme
 - looking after the maintenance of the common property
 - enforcing bylaws and regulations
 - collecting levies from the proprietors to finance all the necessary maintenance.

Cadastral objects related to strata titles

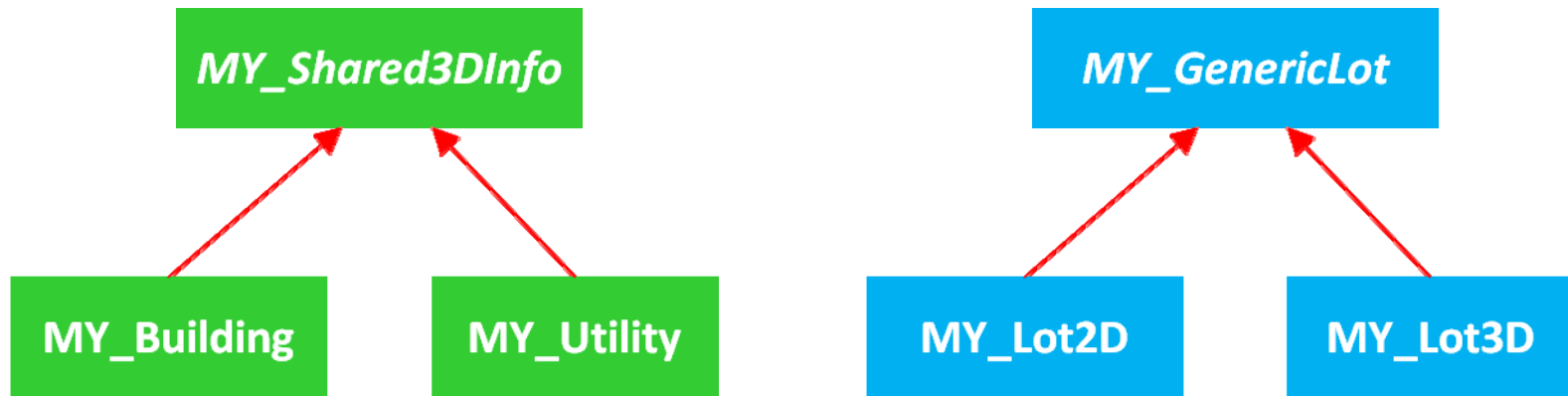


The conceptual model

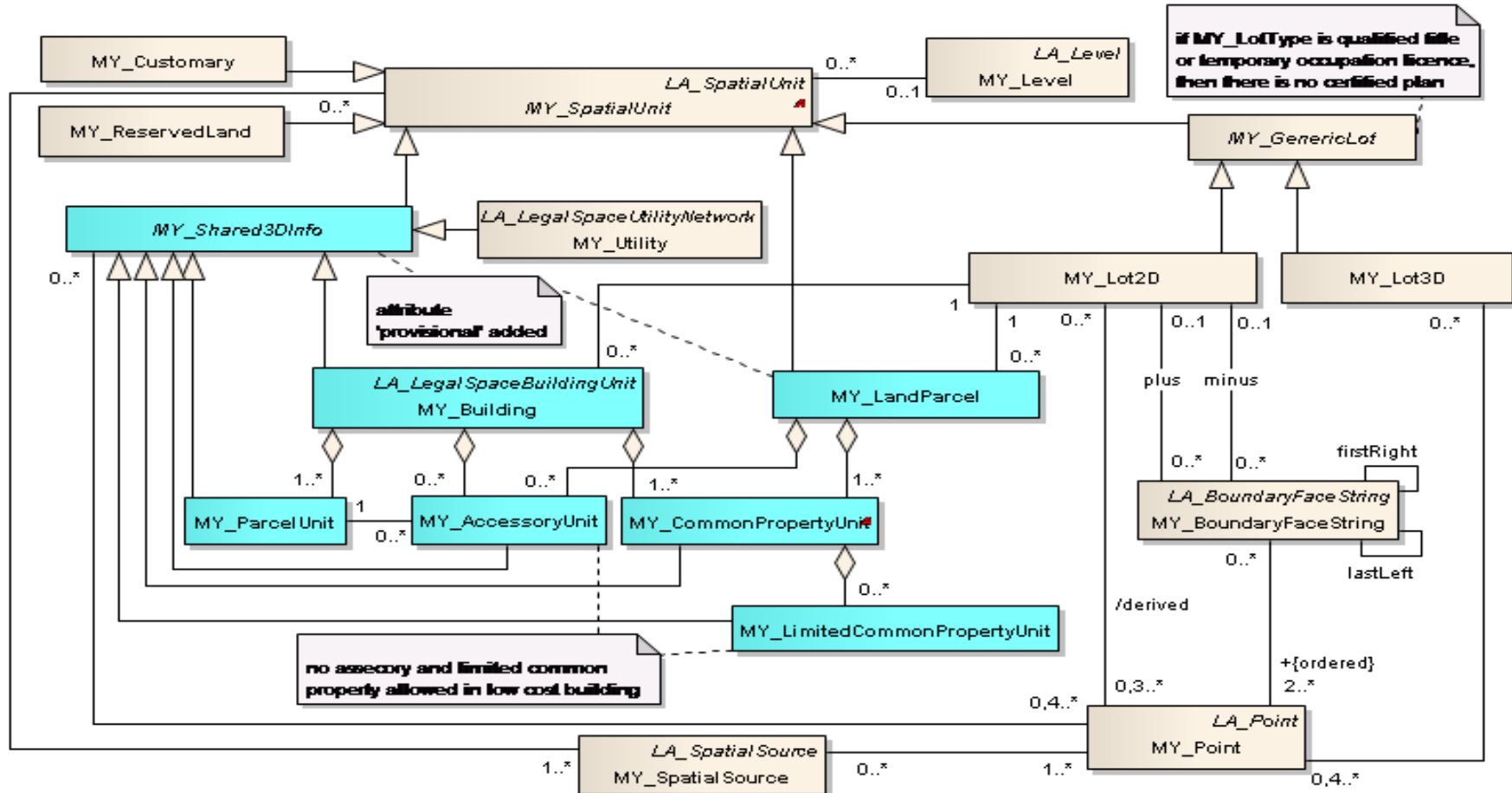
- All classes in the Malaysian country profile are based on the inheritance of the LADM classes.
- The country profile covers
 - Spatial, and
 - Administrative (legal)

The spatial part

- 3D spatial units representations:
 - MY_Building
 - MY_Utility
 - MY_Lot3D

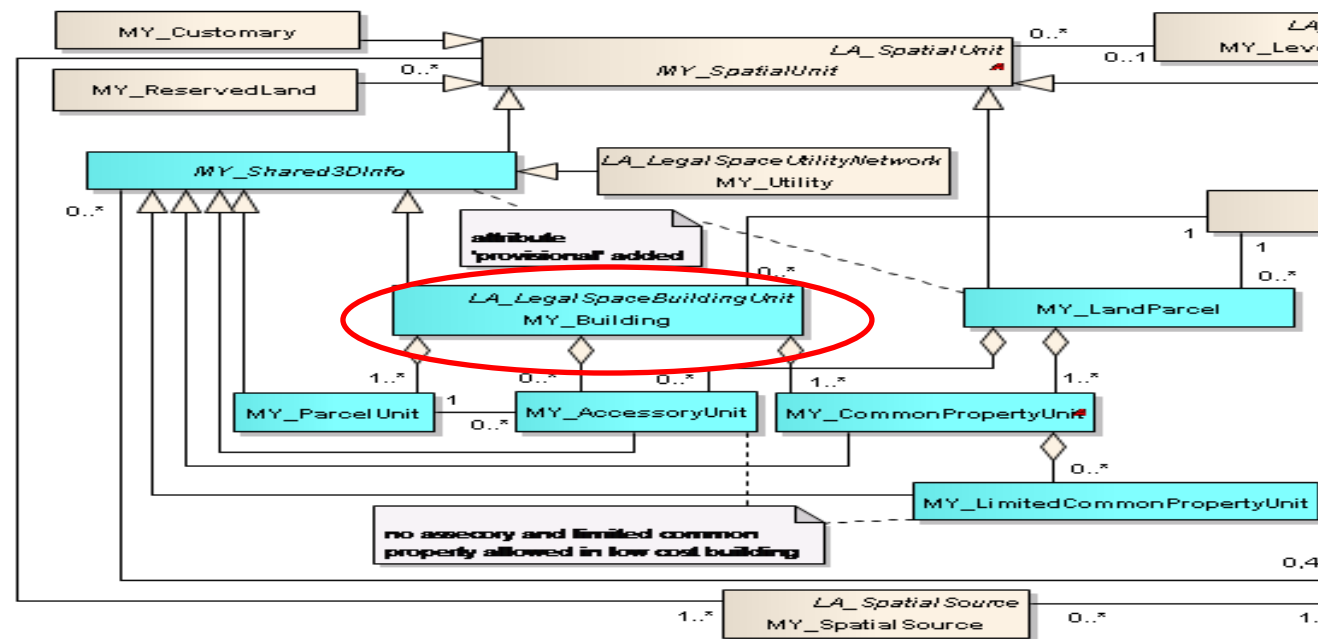


MY_LADM country profile (spatial part)



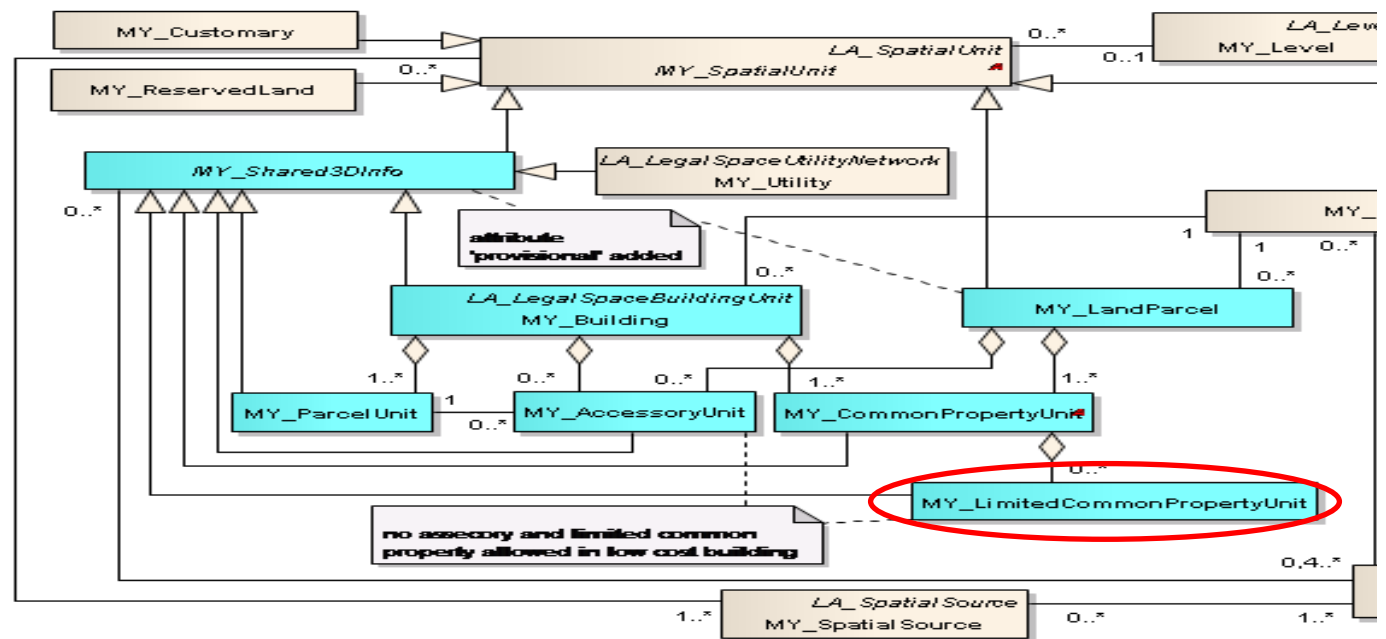
Spatial Part (cont...)

- MY_Building
 - 3D representation
 - Subclasses: MY_ParcelUnit, MY_AccessoryUnit and MY_CommonPropertyUnit



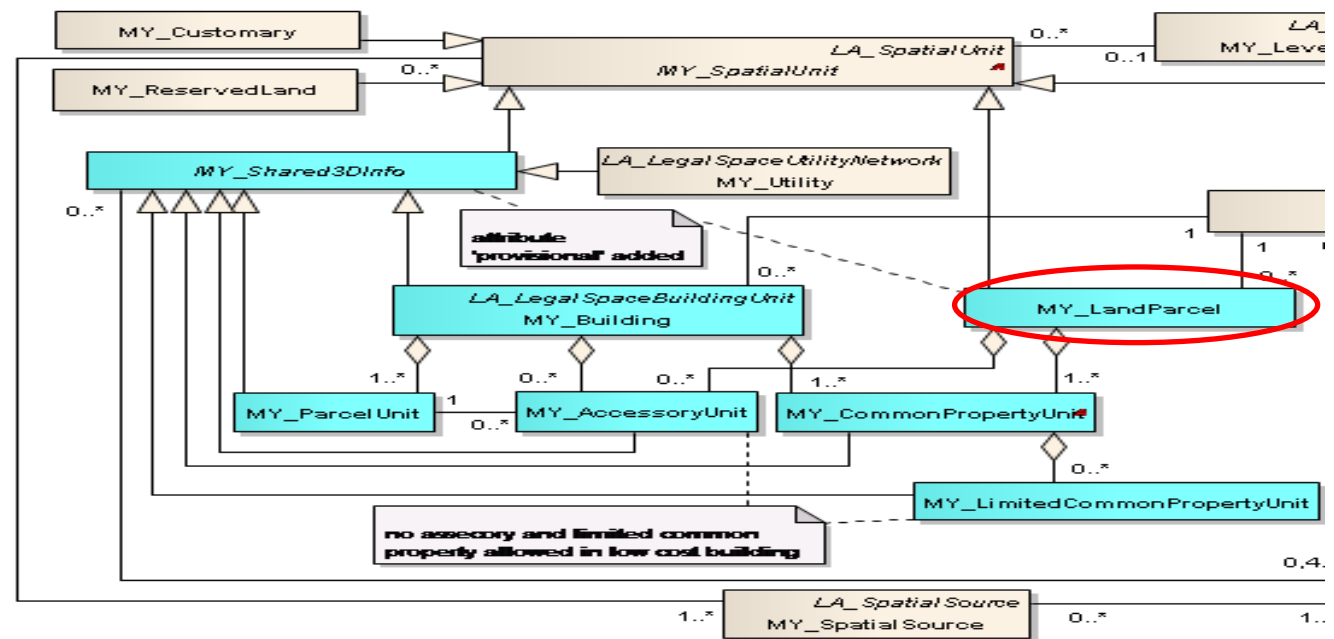
Spatial Part (cont...)

- MY_LimitedCommonProperty
 - 2D and 3D representations
 - Part of relationship to MY_CommonProperty



Spatial Part (cont...)

- MY_LandParcel
 - 2D representation
 - 2D topology
 - MY_AccessoryUnit, MY_LimitedCommonPropertyUnit – part of relationship



Spatial Part (cont...)

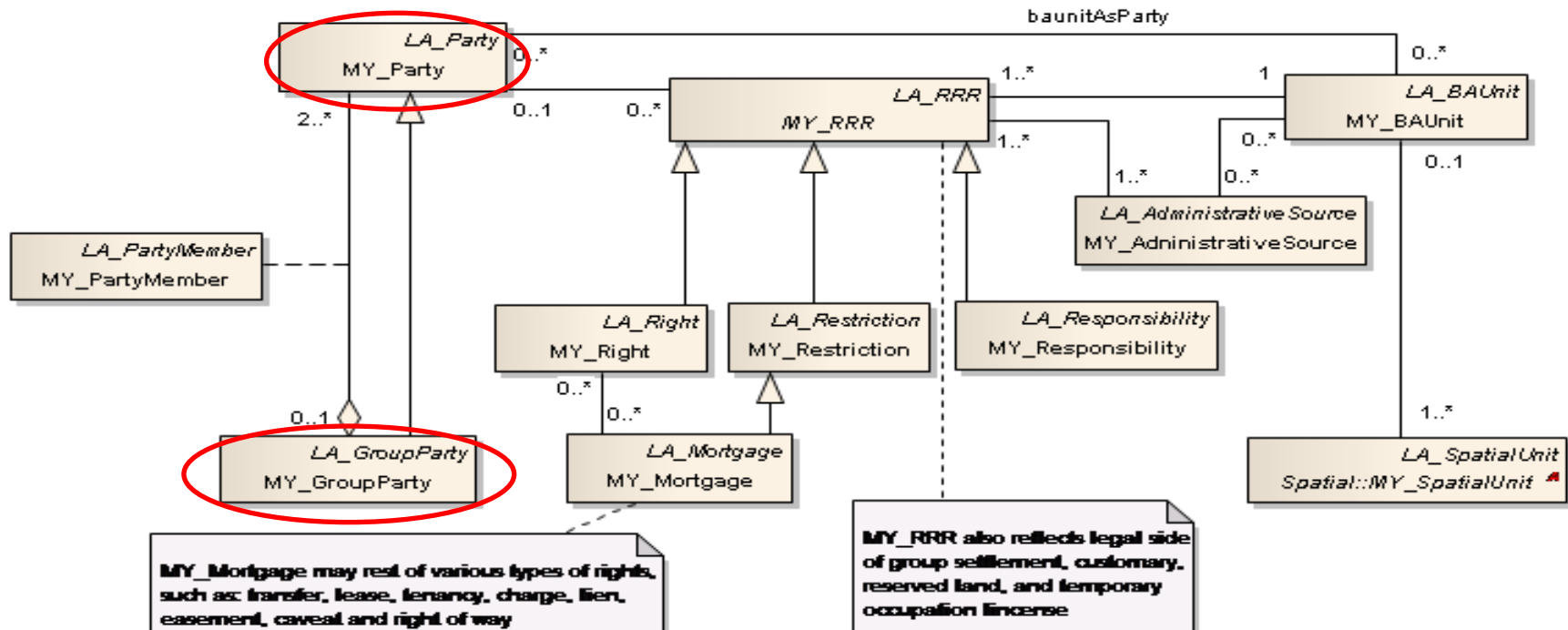
- Spatial source documents (i.e certified plans) – link with spatial unit and point tables
- Spatial unit - suID
- Spatial source - sID
- suID is based on Unique Parcel Identifier (UPI)
- sID for spatial source is the certified plan number

Unique Parcel Identifier (UPI)

OBJECT	UPI
Lot ('Normal')	04010800015662
Building unit; - main block (M) - provisional block* (P)	04010800015662(S)846(B)M1(M)A 04010800015662(S)846(B)P1
Strata objects (inside building) - parcel unit ** - accessories unit - common area unit	04010800015662(S)846(B)M1(M)A(T)1(P)1 04010800015662(S)846(B)M1(M)A(T)1(A)1 04010800015662(S)846(B)M1(M)A(T)1(C)1
Strata land parcel*** Accessory unit, outside building Common property, outside building	04010800015662(S)846(L)1 04010800015662(S)846(A)1 04010800015662(S)846(C)1

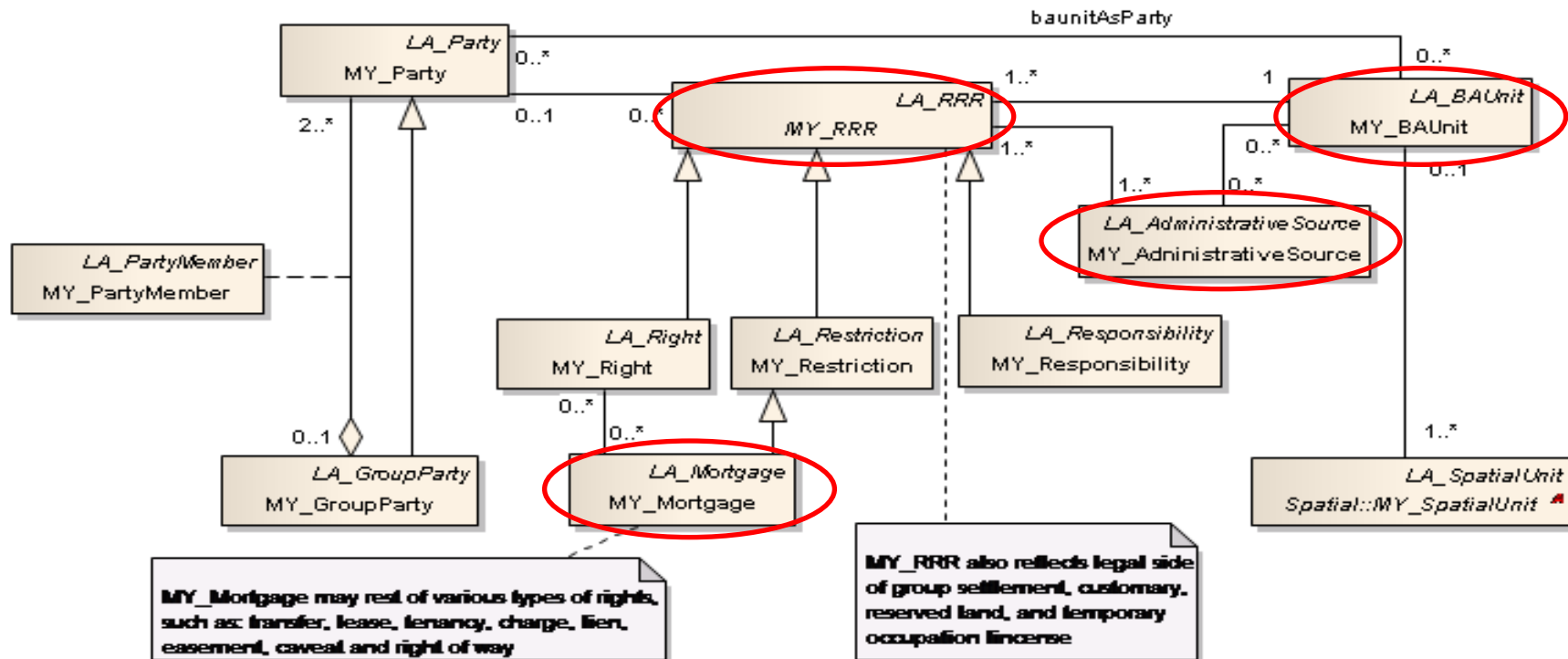
Administrative Part

- The legal part contains Party and Administrative package
- Main class: **MY_Party**
- Specialisation class: **MY_GroupParty**



Administrative Part (cont...)

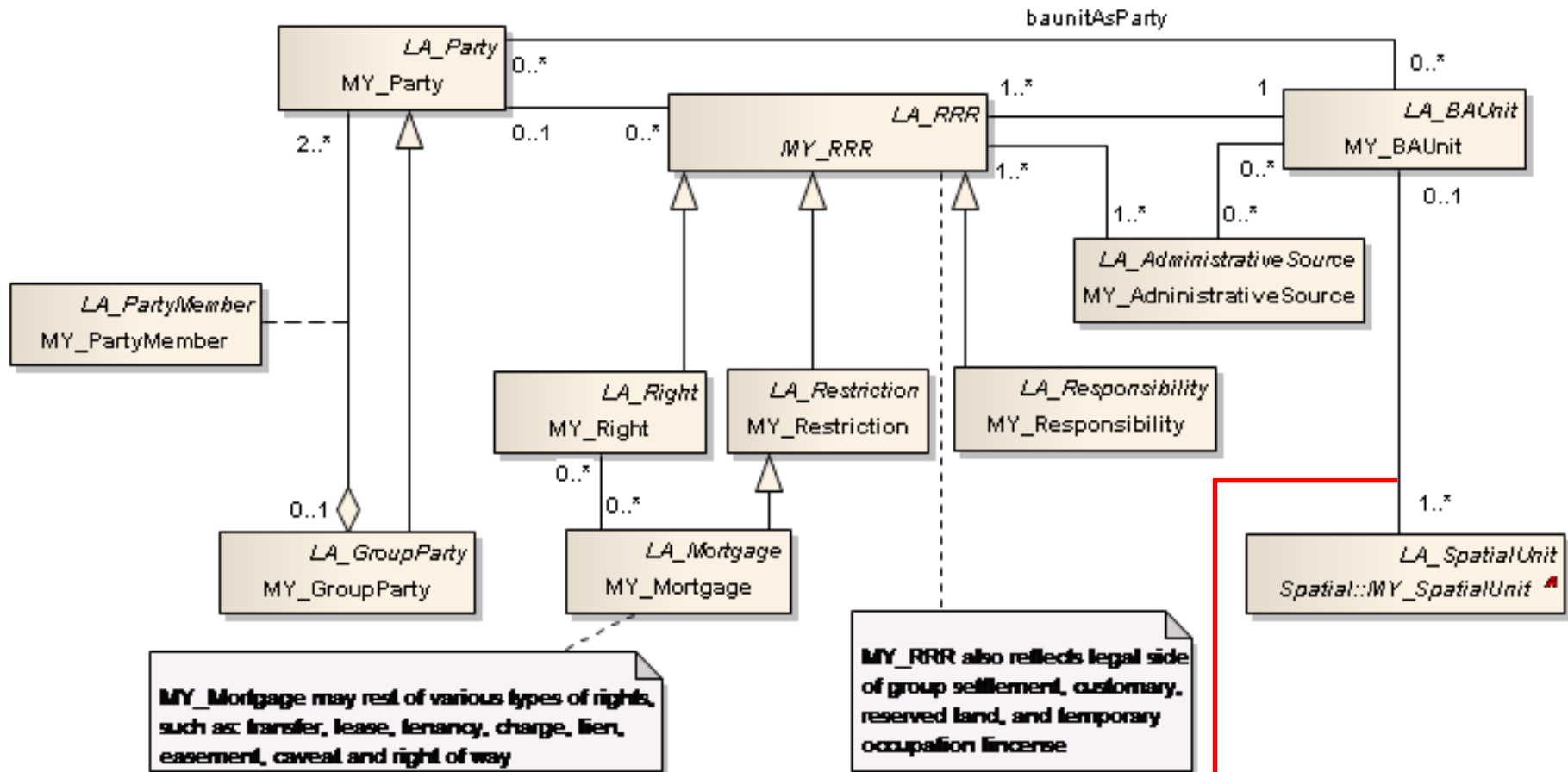
- The administrative package consists:
 - MY_RRR (abstract class), MY_BAUnit
MY_AdministrativeSource and MY_Mortgage



Administrative Part (cont...)

- All information originate from source documents.
- MY_AdministrativeSource - links with MY_RRR and MY_BAUnit.
- sID for administrative source - title number.
- All classes in LADM (except source documents) - subclass of VersionedObject
- VersionedObject
 - to manage and maintain historical data.

MY_LADM Country Profile (administrative part)



The linkage between administrative and spatial parts ←

The technical model

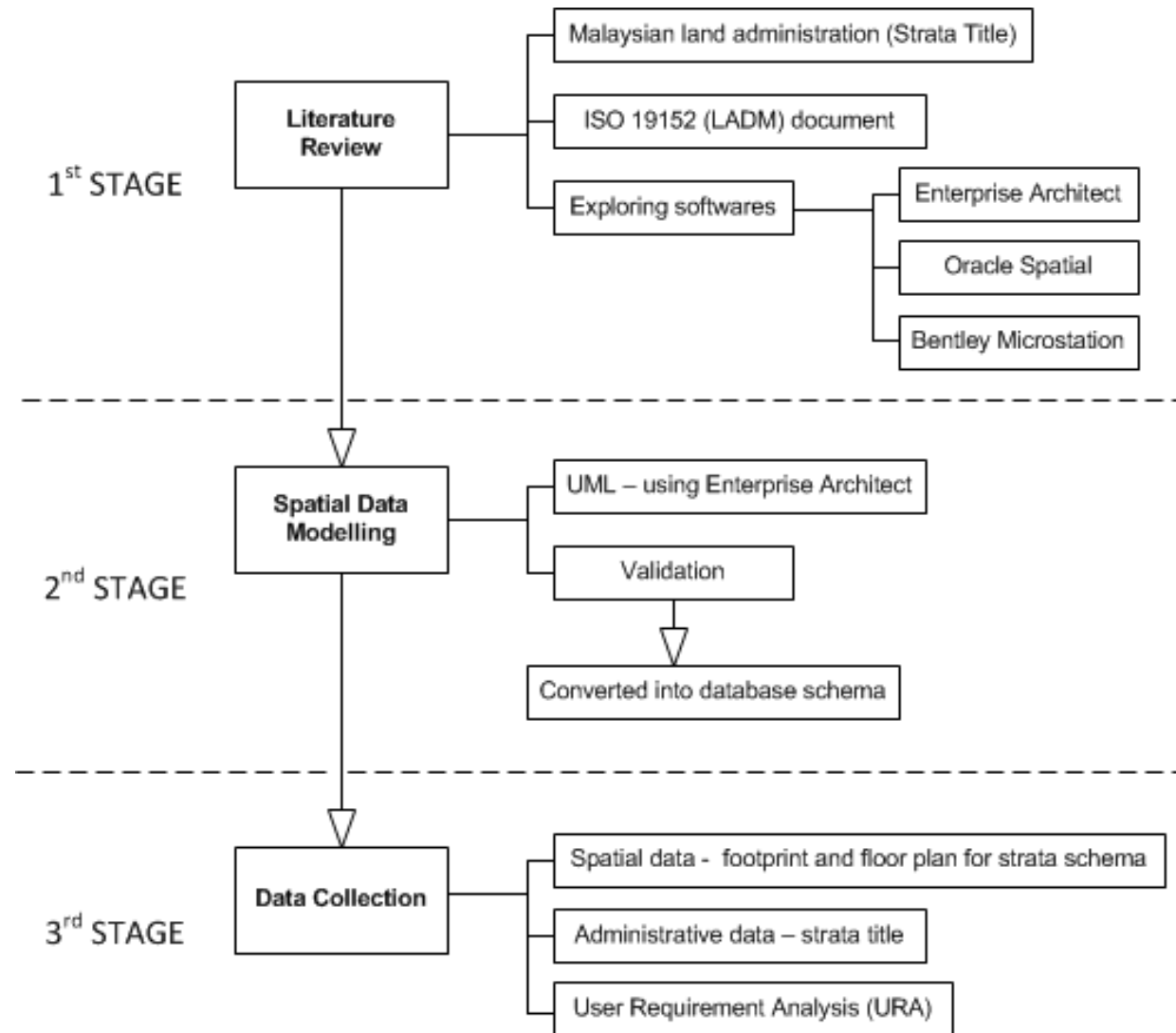
- Sample data are converted into the technical model
- Database construction (Oracle Spatial)
- Visualization and query (Bentley Microstation)
- MY_ParcelUnit represents 3D strata volume objects
- Geometry of parcel unit is stored by multipolygon method (GTYPE = 3007)

The study area

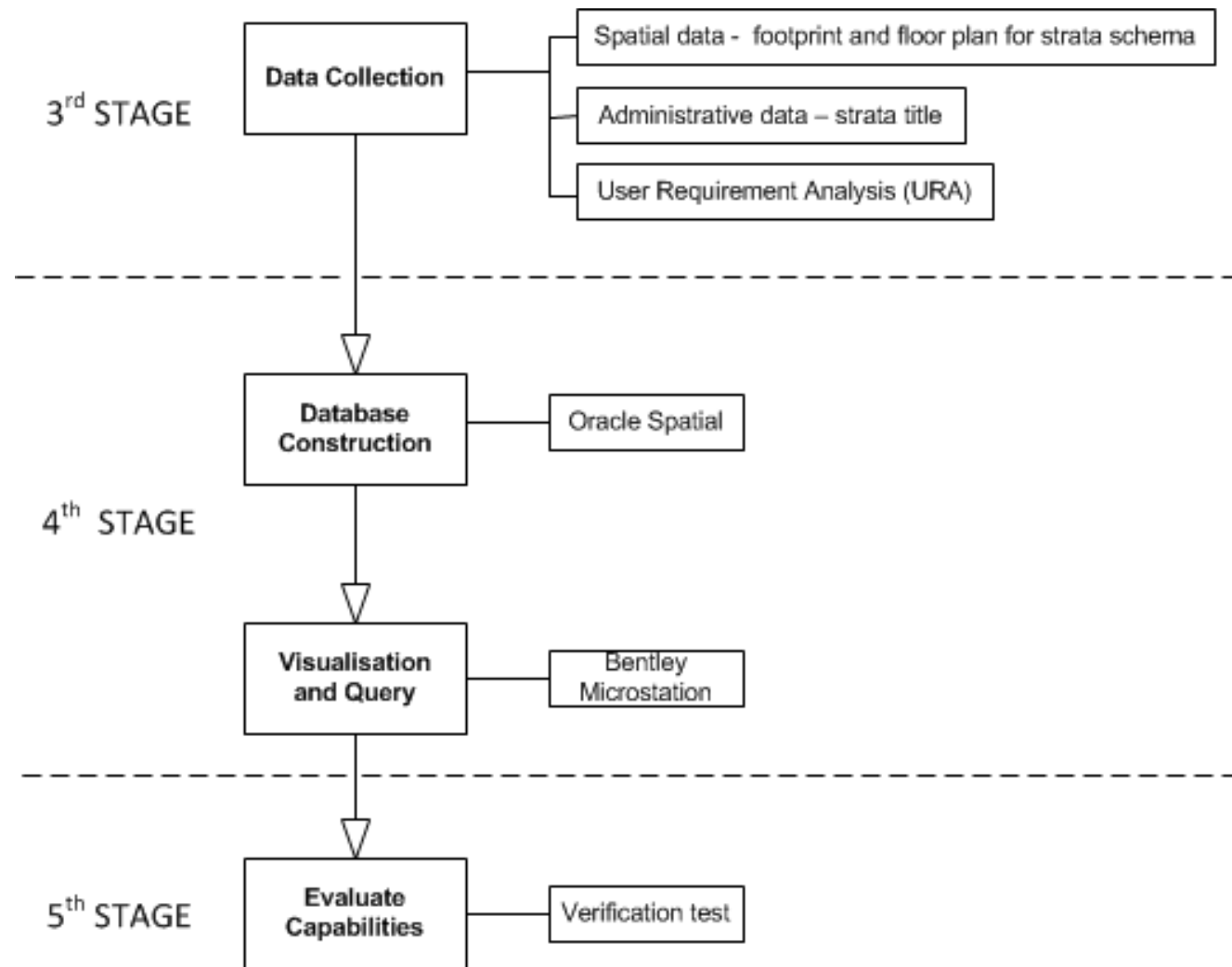


The WYF building

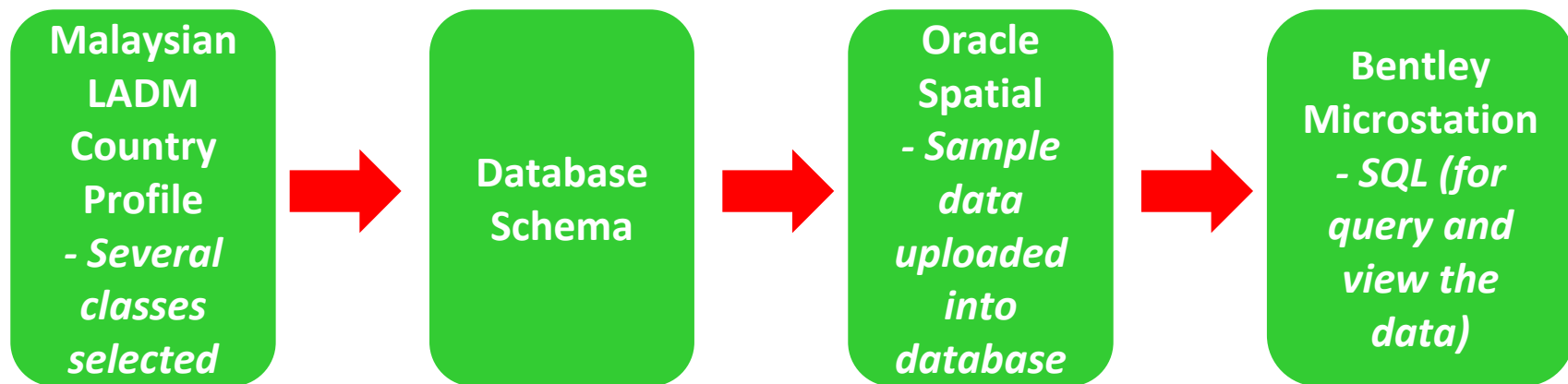
Schematic diagram



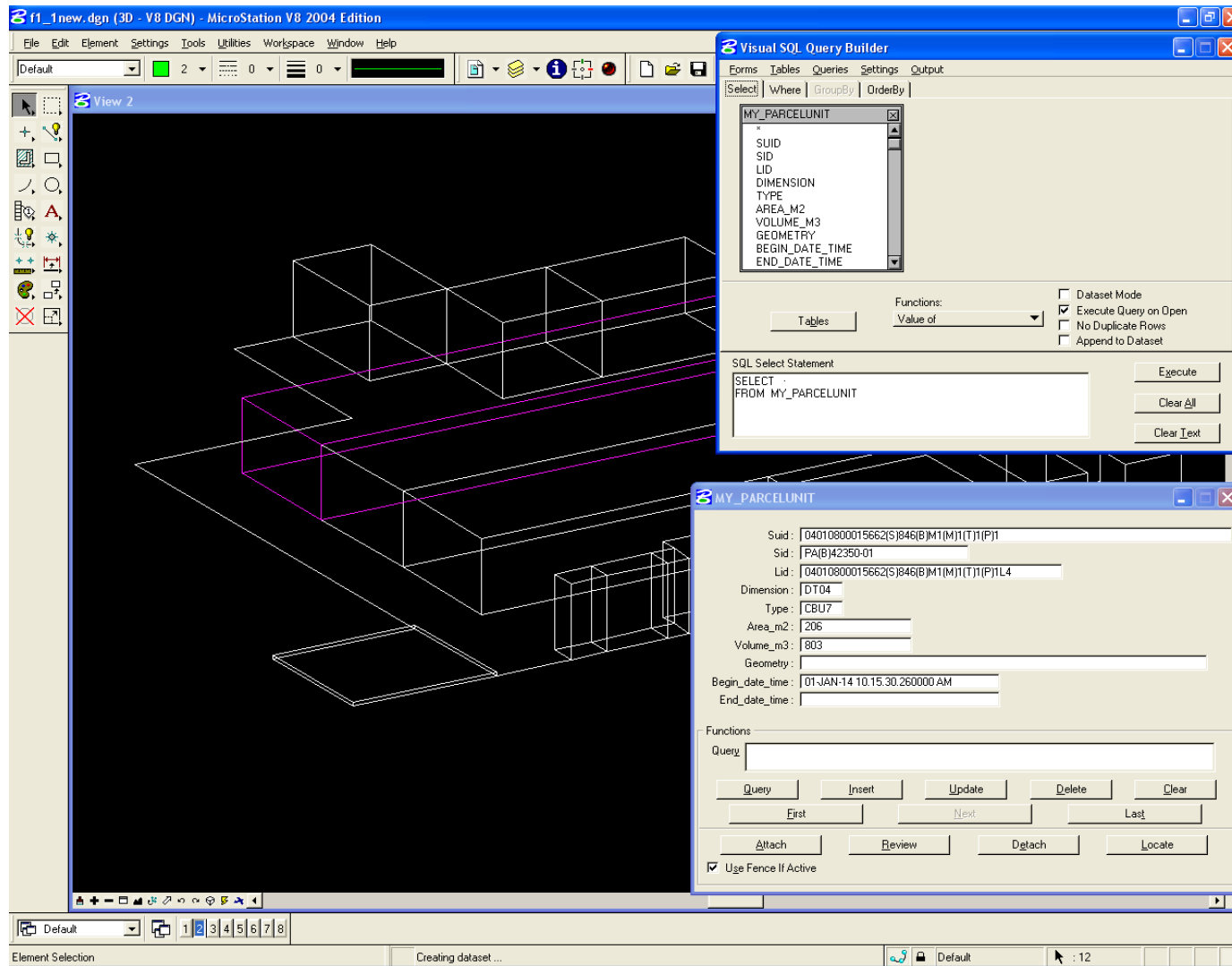
Schematic Diagram (cont...)



Prototype development process



Query and visualization (MY_ParcelUnit)



The screenshot displays the MicroStation V8 2004 Edition interface. The main window shows a 3D wireframe model of a parcel unit. Two data windows are open:

- Visual SQL Query Builder:** Shows the table `MY_PARCELUNIT` with fields: `SUID`, `SID`, `LID`, `DIMENSION`, `TYPE`, `AREA_M2`, `VOLUME_M3`, `GEOMETRY`, `BEGIN_DATE_TIME`, and `END_DATE_TIME`. The SQL Select Statement is:


```
SELECT *
FROM MY_PARCELUNIT
```
- MY_PARCELUNIT:** Displays the following data for a selected record:

Suid :	[04010800015662(S)846(B)M1(M)1(T)1(P)1]
Sid :	[FA(B)42350-01]
Lid :	[04010800015662(S)846(B)M1(M)1(T)1(P)1L4]
Dimension :	[DT04]
Type :	[CBU7]
Area_m2 :	[206]
Volume_m3 :	[803]
Geometry :	[]
Begin_date_time :	[01-JAN-14 10.15.30.260000 AM]
End_date_time :	[]

Concluding remarks

- 3D representations (for strata units)
- Explicit linking of all land administration information and source documents (titles, certified plans)
- Full version management and inclusion of historic information
- Next phase
 - Fully operational prototype for national authority (Mapping Agency and Land Office)

Acknowledgement

- Ministry of Education, Malaysia
- Land Surveyors Board (LJT), Malaysia
- Department of Surveying and Mapping Malaysia
- Melaka State Land Office